

Delta⁴ Phantom+ MR



Fully Compatible with Existing MR-linac

With the Delta⁴ Phantom+ MR you benefit from exactly the same unique technical features and instant approval as the Delta⁴ Phantom+.

The Delta⁴ Phantom+ MR is adapted to be fully compatible with existing MR - linacs. The electronics are mounted on the trolley separate from the phantom, and can be detached as needed.

The Delta⁴ Phantom+ MR is the only system that truly measures dose distribution in the isocentric region. You can thereby instantly approve plans, knowing how much dose is delivered in the target and the OAR's .

The Delta⁴ Phantom+ MR offers:

- Measurements where it matters – detectors in the target region
- Instant pass/fail analysis – delivered dose is instantly compared with planned dose and compared against pass/fail criteria
- Fast set-up - easy to move from trolley to couch with no lifting required
- Easy alignment with clear markings to position the phantom
- Stable p-type detectors eliminates re-calibration
- Ion chamber measurements can also be performed in the phantom

Delta⁴
by ScandiDos

Innovative and Efficient QA
www.delta4family.com



Delta⁴ Phantom+ MR

D001 03 012 02

Technical Specifications:

Cylinder Phantom

Material PMMA, optional Plastic Water DT

Diameter 22 cm

Length 40 cm **Total Length** 71 cm **Total Weight** 27 kg

Ion chamber insert in cylinder Inserts for common cylindrical ion chambers available

Detectors

Type p-Si

Total number 1069

Layout Distributed on coronal and sagittal plane

Max field size 20 x 38 cm² (when merging two consecutive measurements, otherwise 20 x 20 cm²)

Distance between detectors

Central area (6 x 6 cm²) 5 mm (or 2.5 mm in longitudinal direction with merging of two consecutive measurements)

Outer area 10 mm

Size (radial x axial) 1 x 0.05 mm³ = 0.00004 cm³

Detector stability (6MV beam)

Better than 0.1% per kGy, typically 0.04%/kGy

Size and Weight

Total length 71 cm

Total weight 27 kg

Remote Unit Total

Total length 17 cm

Total weight 3 kg

Compatibility

Modalities Photon beams, with and without flattening filter

Treatment Plan import Any treatment planning system that can exported DICOM RT plan and RT Dose, Structure

MR Compatibility

Fully compatible with existing MR-linacs, no Faraday Cage issues

Power and Communication

Ethernet connector (RJ-45) for communication

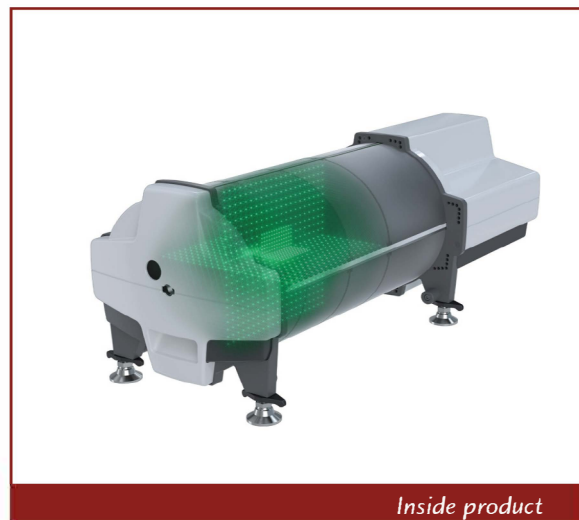
Power adaptor is included

Cables between remote unit and measurement phantom

Not available in the US and certain other markets.

Technical specifications are subject to change without notice™

Delta⁴ Phantom+ is a trademark of ScandiDos AB (publ)



Inside product



Product on trolley

Delta⁴
by ScandiDos

Innovative and Efficient QA
www.delta4family.com

